

HSRC 3ROLL 900 - 1800BW INSTALLATION DRAWING

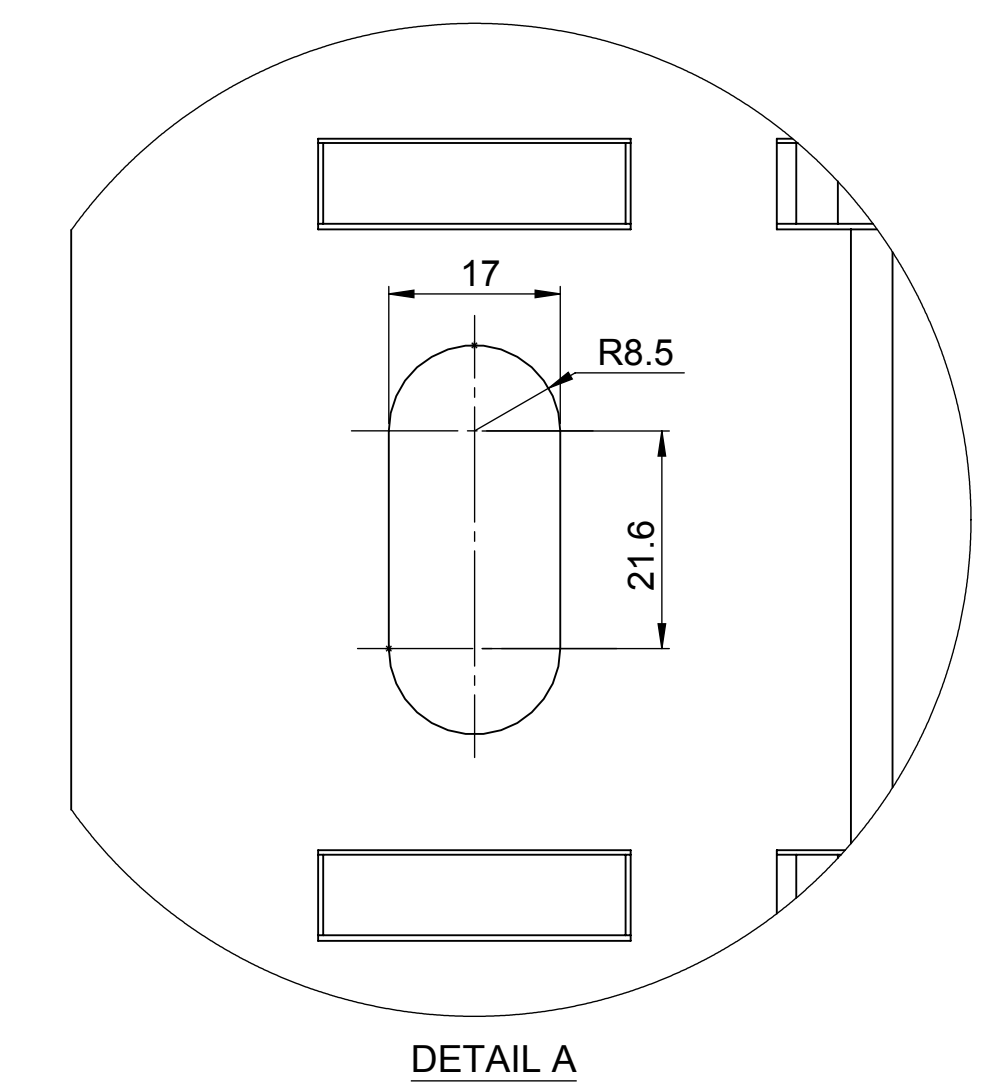
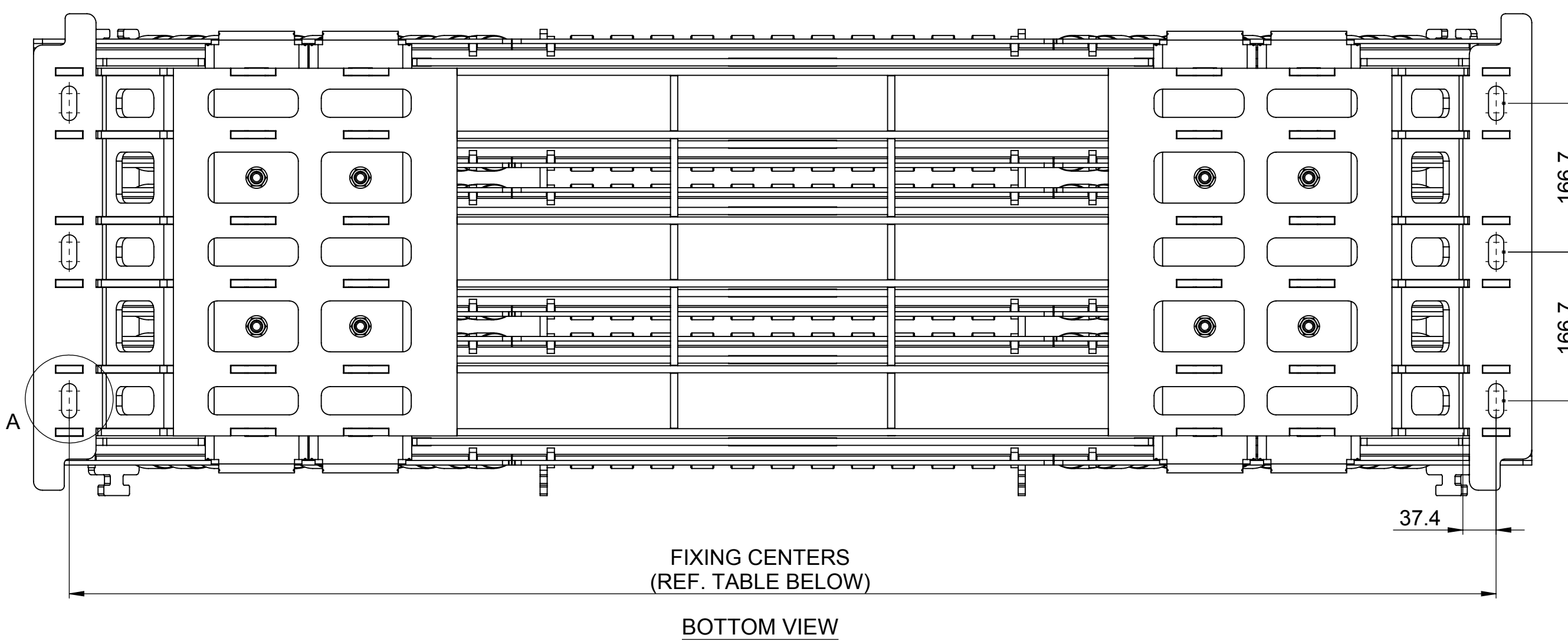
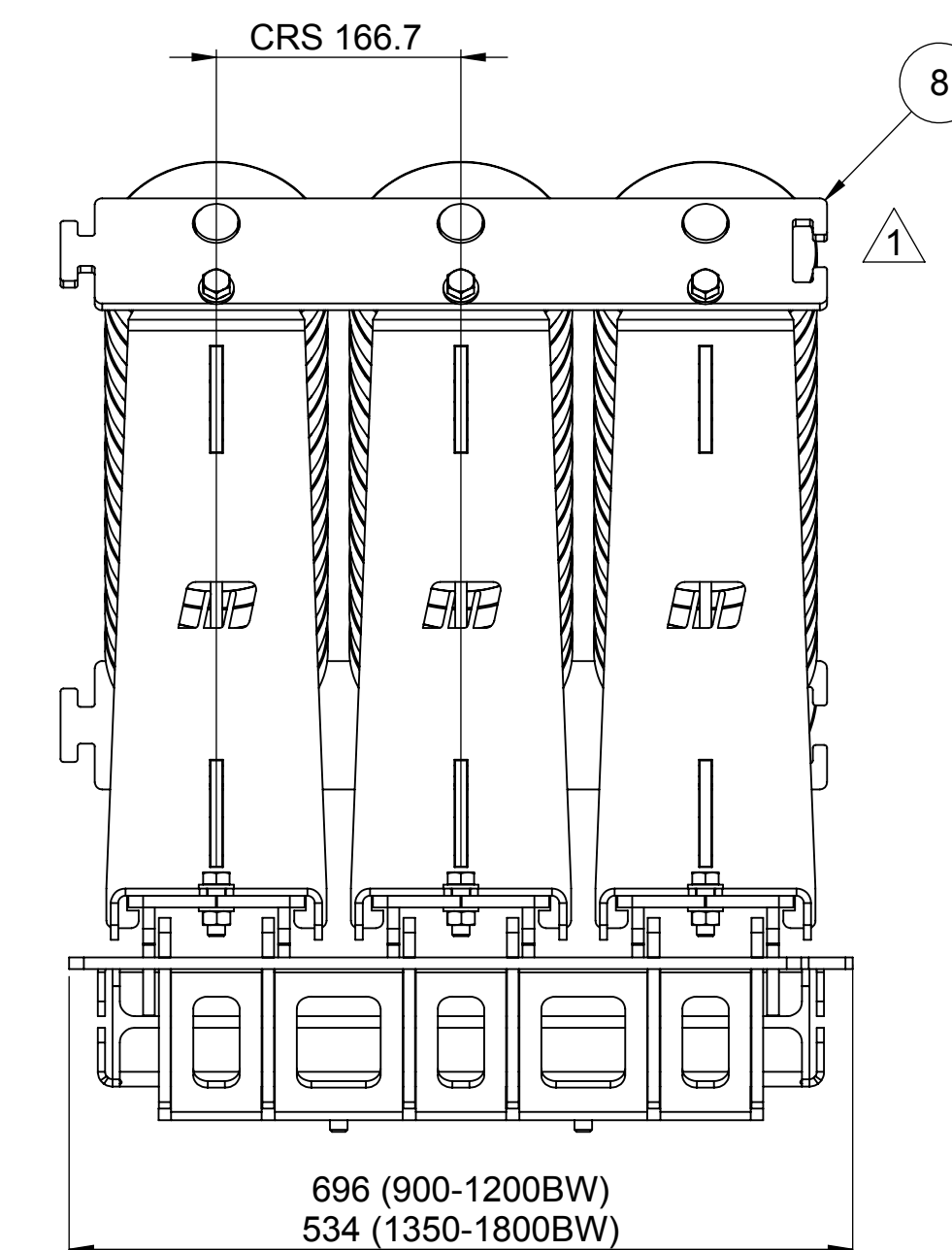
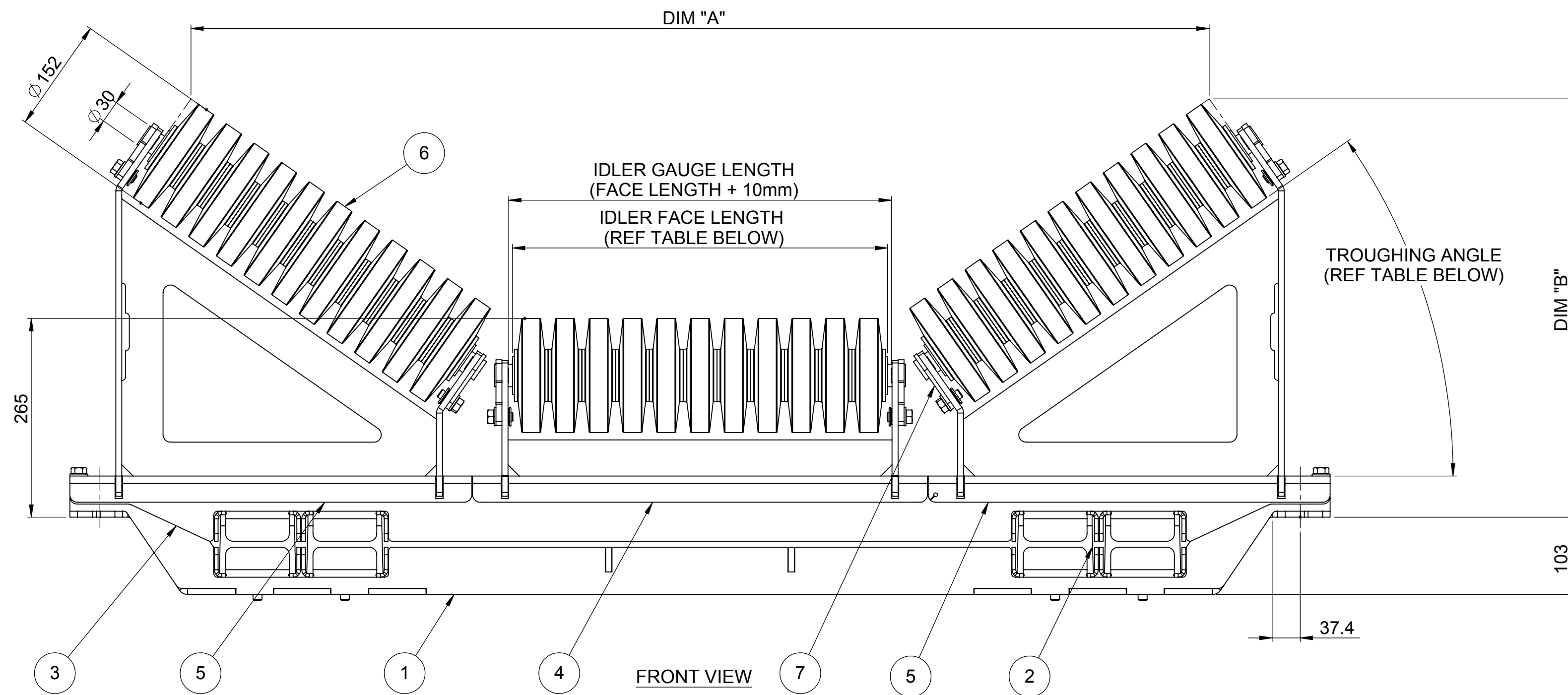
DIM "A"		
BELT WIDTH (mm)	35°	45°
750	803	737
900	935	858
1050	1067	978
1200	1225	1123
1350	1357	1244
1500	1515	1388
1650	1647	1509
1800	1779	1630

DIM "B"		
BELT WIDTH (mm)	35°	45°
750	437	478
900	466	513
1050	495	548
1200	529	590
1350	557	626
1500	592	668
1650	620	704
1800	649	739

BELT WIDTH		FIXING CENTERS		IDLER FACE LENGTH
(mm)	(in)	(mm)	(mm)	(mm)
750	30	990	290	
900	36	1144	340	
1050	42	1296	390	
1200	48	1448	450	
1350	54	1600	500	
1500	60	1752	560	
1650	66	1904	610	
1800	72	2058	660	

NOTE: * INDICATES SPARE PARTS

ITEM No.	QTY	COMPONENT DESCRIPTION		PART No.	REFERENCE
1	1	HSRC BASE	HSRC BASE FRAME	HSRC-301-52XX	BASE
2	4	IMPACT BAR	3 ROW IMPACT BAR	31617-475	RUBBER BAR
	2		4 ROW IMPACT BAR	31617-645	RUBBER BAR
3	1	SLEEVE FRAME	FLAT SLIDE FRAME	HSRC-301-52XX-YY31	TOP FRAME
4	3	CENTER SLEEVE	3 ROW CENTER IDLER MOUNT	HSRC-301-52XX-YY32	CENTER NO-TROUGH IDLER
	4		4 ROW CENTER IDLER MOUNT		CENTER NO-TROUGH IDLER
5	6	OUTER SLEEVE	3 ROW 35DEG OUTER SLEEVE	HRSC-301-52XX-3533	35DEG TROUGHING IDLER
			3 ROW 45DEG OUTER SLEEVE	HRSC-301-52XX-4533	45DEG TROUGHING IDLER
			4 ROW 35DEG OUTER SLEEVE	HRSC-301-52XX-3533	35DEG TROUGHING IDLER
			4 ROW 45DEG OUTER SLEEVE	HRSC-301-52XX-4533	45DEG TROUGHING IDLER
6	9	*IDLER	3 ROW 30SERIES 152DIA RUBBER IMPACT IDLER	TMI3-015-2XX3-RR	RUBBER ROLLER
			4 ROW 30SERIES 152DIA RUBBER IMPACT IDLER		
7	6	*IDLER LOCK	3 ROW 30SERIES IDLER LOCK	30SERIES IDLER LOCK TEAR	TEAR DROP IDLER LOCK
			4 ROW 30SERIES IDLER LOCK	30SERIES IDLER LOCK TEAR	
8	4	*INTERLOCKING IDLER LOCK	3 ROW 30SERIES INTERLOCKING IDLER LOCK	30SERIES IDLER LOCK	INTERLOCK IDLER LOCK
			4 ROW 30SERIES INTERLOCKING IDLER LOCK	30SERIES IDLER LOCK	



NOTE: YY INDICATES DEG TROUGH
NOTE: XX INDICATES BELT WIDTH IN INCHES

NOTE: ROW INDICATES AMOUNT OF 3ROLL SETS.
FOR EXAMPLE, THE PRODUCT SHOWN IS A 3 ROW HSRC.
4ROW HSRC RANGES FROM 900-1200BW
AND 3ROW FROM 1350-1800BW

REV.	DESCRIPTION	DATE	APPROVED
2	ADDED 750 BELT WIDTH	2014-07-02	R. BEER
1	INTERLOCKING IDLER LOCK CHANGED TO SINGLE INTERLOCKING BAR	2014-06-05	R. BEER
0	INITIAL RELEASE	2014-03-28	R. BEER

APPROVAL			
SIGN:	F. DE KLERK	SIGN:	S. ENSLIN
DATE:	2014-06-05	DATE:	2014-06-05
MARKETING		PRODUCTION DEPT.	
SIGN:	C. GAKIS	SIGN:	
DATE:	2014-06-05	DATE:	
SALES DEPT.		OTHER	

© COPYRIGHT MARTIN, A DIVISION OF MARTIN BULK HANDLING SOLUTIONS(PTY) LTD., T/A MARTIN ENGINEERING. ALL RIGHTS RESERVED COVERED BY U.S. AND FOREIGN PATENTS PENDING AND ISSUED. ® AND ™ INDICATE TRADEMARKS OF MARTIN ENGINEERING.

PROPERTY OF MARTIN
THE INFORMATION CONTAINED WITHIN THIS DRAWING FILE INVOLVES CONFIDENTIAL PROPRIETARY DESIGN RIGHTS OF MARTIN.

IT IS SUBMITTED FOR A SPECIFIED PURPOSE AND THE RECIPIENT, BY ACCEPTING THIS DOCUMENT AGREES
1. THAT THIS DOCUMENT WILL NOT BE COPIED OR REPRODUCED IN WHOLE OR IN PART, EXCEPT TO MEET THE PURPOSE FOR WHICH IT WAS DELIVERED, AND
2. THAT ANY SPECIAL FEATURES PARTICULAR TO THIS DESIGN WILL NOT BE INCORPORATED IN OTHER PROJECTS AND/OR DESIGNS.
3. THAT THIS IS NOT FOR PUBLIC DISTRIBUTION

martin WITBANK SOUTH AFRICA +27 13 656 5135 www.martin-eng.co.za

DRAWN BY: FK
DATE: 2014-04-08
CHK.: LK
DATE: -

TITLE MARTIN ENGINEERING WITBANK SOUTH AFRICA
3ROLL HSRC INSTALLATION DRAWING
ENG.: RB
DATE: -
PM.: DB
DATE: -

DRAWING NUMBER SHEET 1 OF 1
HSRC 900-1800BW

Rev: 2
SCALE: NTS